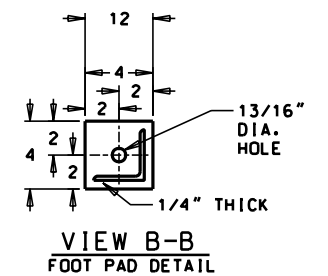
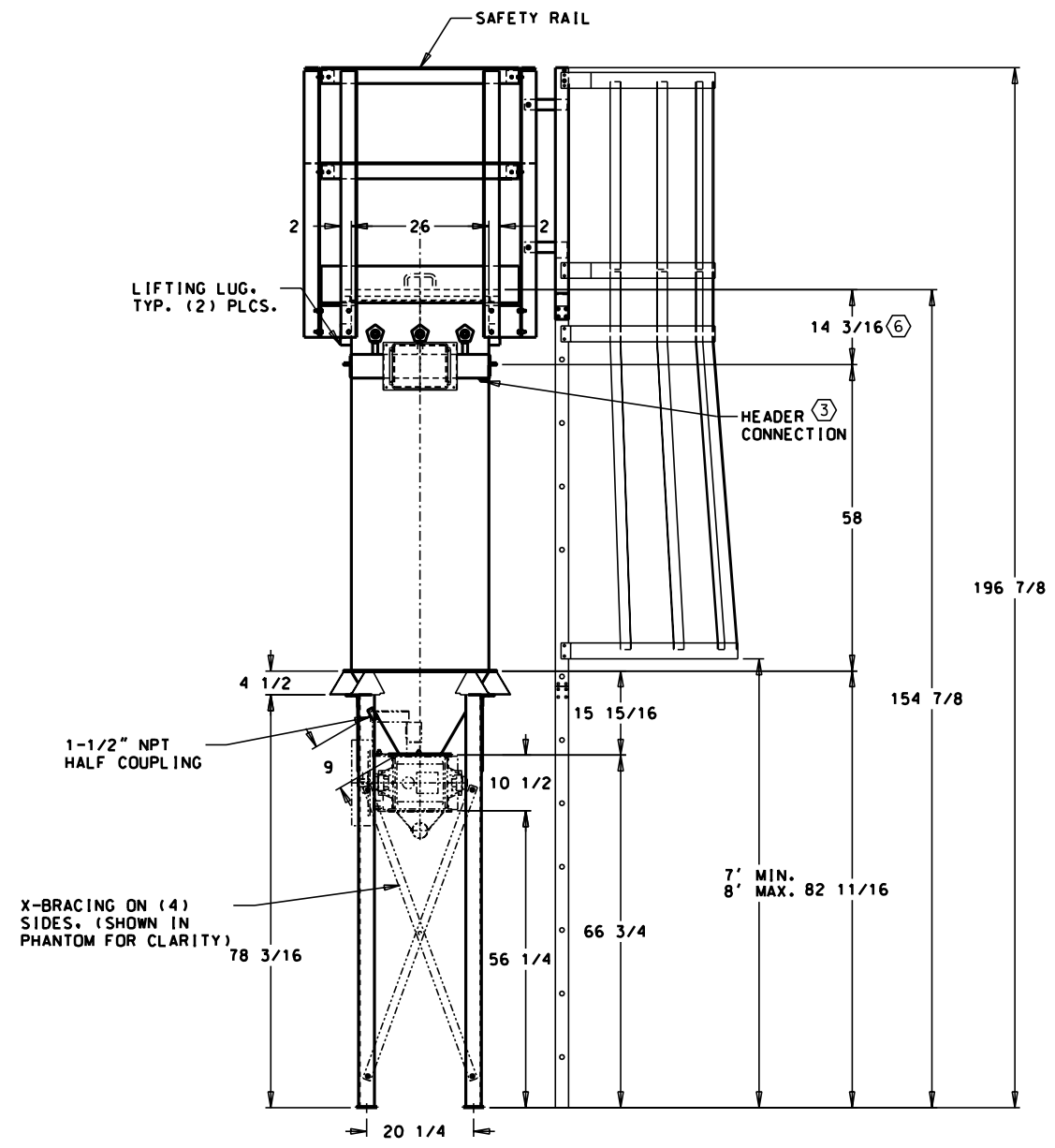
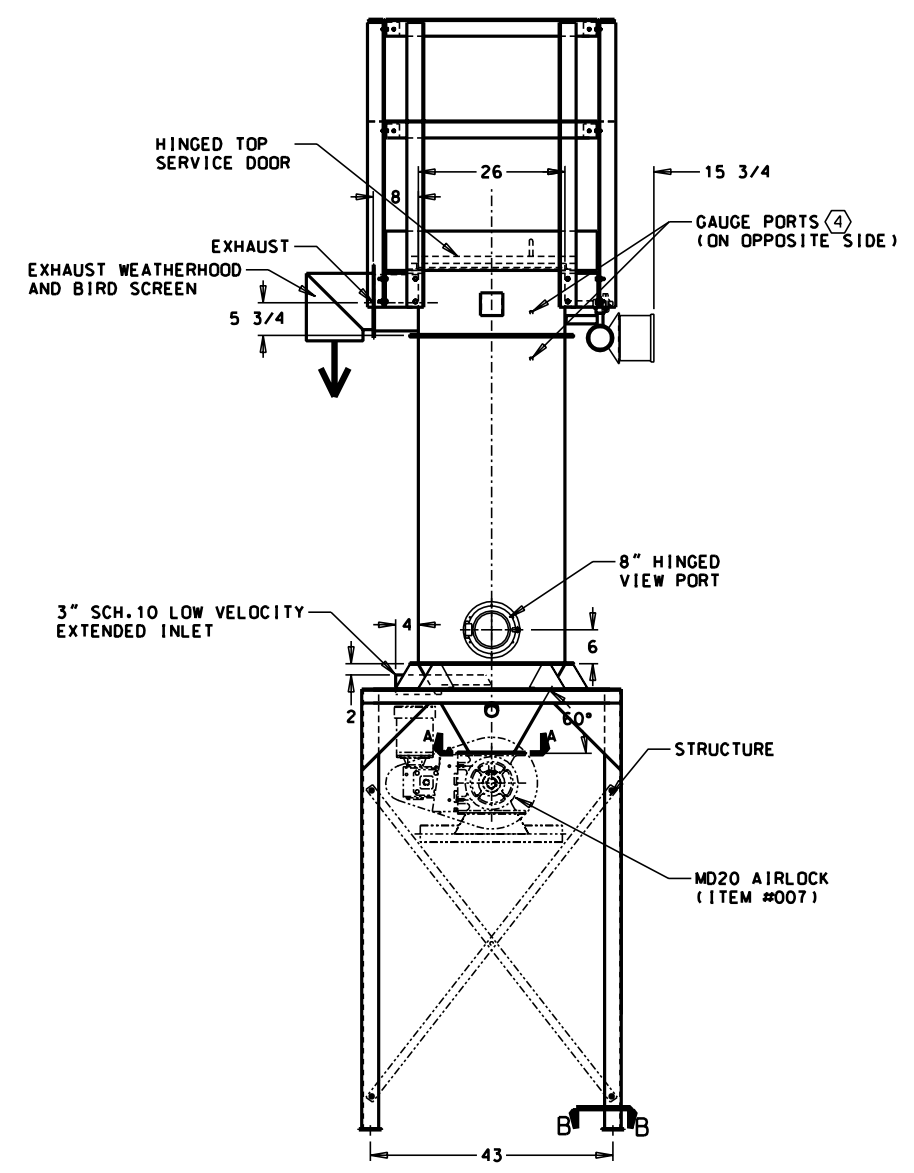
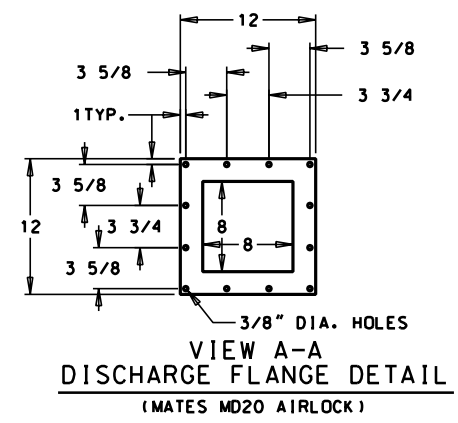
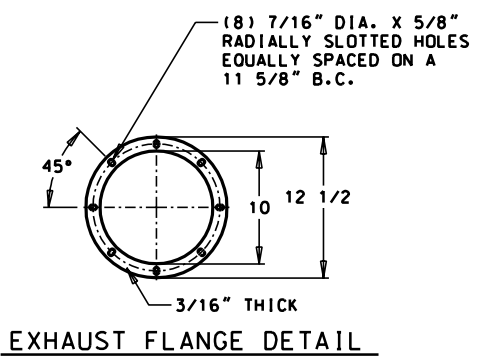
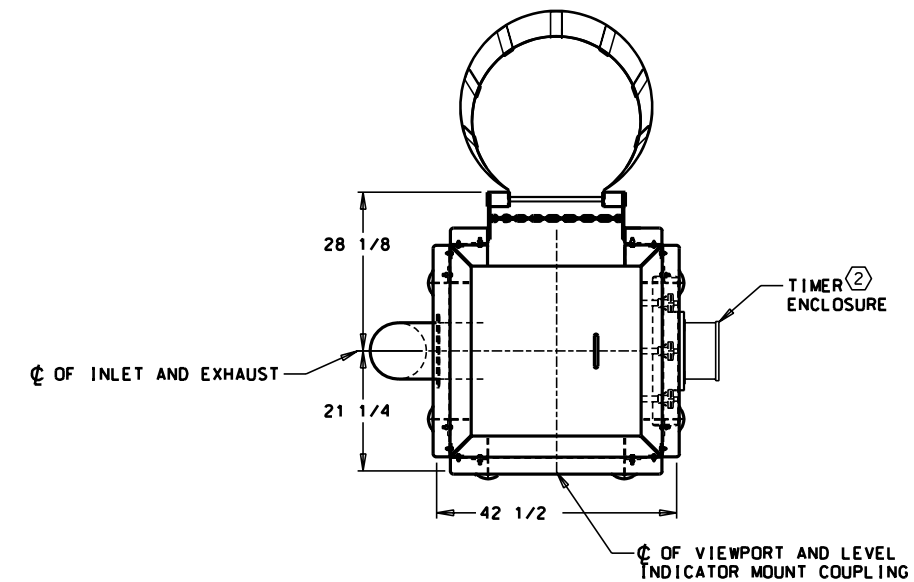


REVISIONS			
LTR.	DESCRIPTION	DATE	BY
C	RELEASED FOR CUSTOMER INFORMATION	10/18/10	TEB

This print is certified to be dimensionally correct to  $\pm 1/4$  inch on all components,  $\pm 1/2$  on overall dimensions up to 120 inches and  $\pm 1 1/2$  on all dimensions greater than 120.

MAC EQUIPMENT, INC.  
 BY Todd Berger DATE 10/18/10



- NOTES:
- ALL DIMENSIONS ARE IN INCHES.
  - NEMA 4X TIMER ENCLOSURE. TIMER CONTROL PANEL REQUIRES 110 VOLT, 60 HZ POWER SUPPLY.
  - 3/4" NPT FOR HEADER SUPPLY AIR. 90-100 PSI OF CLEAN, DRY AIR REQUIRED AT 3.6 SCFM.
  - (2) 1/8" NPT CONNECTIONS MUST HAVE PIPE PLUGS IF DIFFERENTIAL PRESSURE GAUGE IS NOT USED. FILTER INCLUDES A MAGNETIC PRESSURE GAUGE AND KIT SHIPPED LOOSE FOR FIELD INSTALLATION.
  - FILTER IS CONSTRUCTED OF 12 GA. CARBON STEEL.
  - DIMENSION INCLUDES TUBESHEET THICKNESS.
  - FILTER INCLUDES (9) 16 OZ. SINGED POLYESTER DACRON BAGS W/ GROUND WIRE AND GALVANIZED CAGES PROVIDING 62 SQ. FT. OF CLOTH, W/ AN AIR TO RATIO OF 4:1 @ 250 CFM.
  - S/N: 161448-006-1
  - INTERIOR PRODUCT CONTACT AREAS COATED WITH INDUSTRIAL GRADE EPOXY
  - APPROXIMATE TOTAL WT: 2500 LBS.

JOB NAME: PRC-01  
TAG NUMBER: F-3622

THIS MATERIAL IS THE PROPERTY OF MAC EQUIPMENT INC. AND SHOULD NOT BE REPRODUCED, PUBLISHED OR DISCLOSED TO OTHERS WITHOUT AUTHORIZATION AND SHALL NOT BE USED IN ANY WAY AGAINST OR DETRIMENTAL TO MAC EQUIPMENT INC., SABETHA, KANSAS.

54ST9 STYLE III FILTER W/ STRUCTURE FOR POET RESEARCH CENTER

SCALE: 1/16" = 1"    JOB NO.: 161448    DRAWING NO.: DM105517 C

DM105517